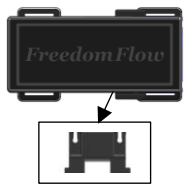


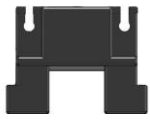
## Parts Included

- A. Main Unit
- B. Tube Holder (2)
- C. Remote Control
- D. Latex Tubing 5ft (1.5m)
- E. Charger Base
- F. Velcro Straps 15inch (38cm)
- G. Wall Charger
- H. Safety Clip

A. Main Unit



B. Tube Holder



C. Remote Control



D. Latex Tubing



E. Charger Base



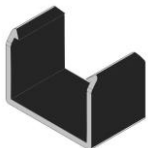
F. Velcro Straps



G. Wall Charger



H. Safety Clip



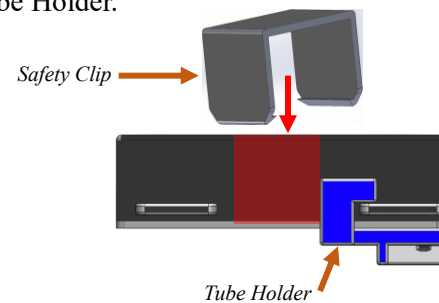
## Charging the Freedom Flow™

**Note :** Always disconnect the Freedom Flow™ from the tubing and leg bag before charging to prevent leaks and internal damage. Charge for 8 hours before its initial use and always ensure Freedom Flow™ is completely dry before charging.

1. Plug the Wall Charger (G) into a household outlet.
2. Connect the Wall Charger into the Charger Base (E).
3. Place the Main Unit (A) into the Charger Base with the Tube Holder (B) facing up.
4. The LED on the Charger Base will turn red. This indicates the charging status.
5. When the unit is fully charged, the LED on the Charger Base will turn green. This indicates the unit is ready for use.

## Installing the Suggested Safety Clip

Slide the Safety Clip on to the back side of the Main Unit after you have attached the Tube Holder.



## Operating Instructions

### Step 1

Fully charge the device prior to installation. see section- *Charging the Freedom Flow™*

### Step 2

#### Detach the Tube Holder.

Gently slide the Tube Holder off (Fig.1).

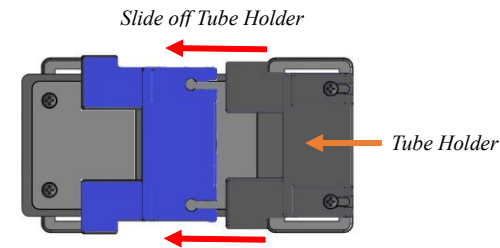


Fig. 1

### Step 3

#### Install the Latex Tubing.

Place the Latex Tubing on the back side of the Main Unit. Make sure the tubing is centered between the pincher. (Fig.2).

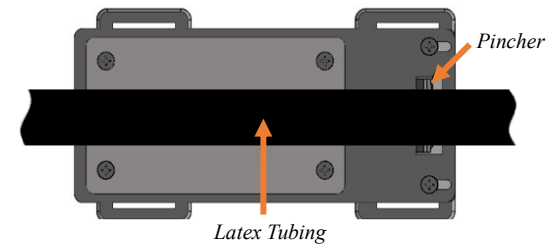


Fig. 2

### Step 4

#### Attach the Tube Holder.

Slide the Tube Holder on until it fits into place to secure the tubing. (Fig.3).

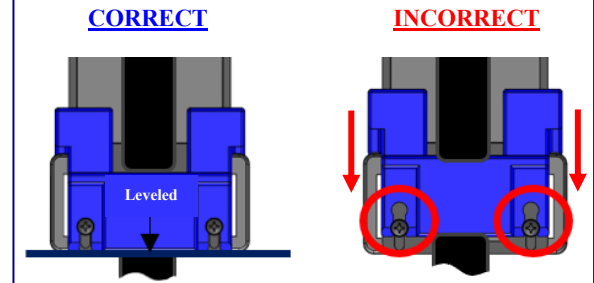


Fig. 3

### Step 5

#### Thread the Velcro Straps.

Thread the Velcro Straps through all 4 Velcro Strap holders. See example (Fig.4).

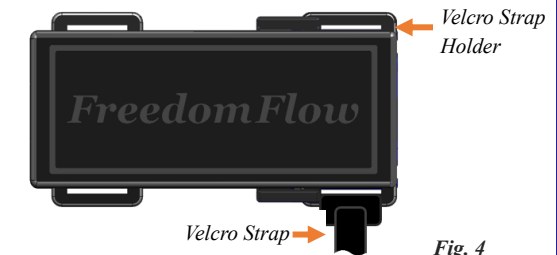


Fig. 4

### Step 6

#### Begin using your Freedom Flow™.

Press and hold the button on the Remote Control until drainage is complete.

### Step 7

#### Remove Latex Tubing before charging.

Gently slide the Tube Holder off and remove the Latex Tubing (Fig. 5).

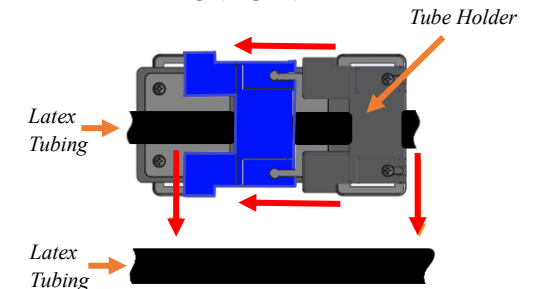


Fig. 5

## Warning

- Never immerse the device in liquids or expose it to bodily fluids.
- Do not drop the device.
- Never attempt to open the Main Unit.

## Recommendations

- Latex Tube size and softness is important for proper operation of the Freedom Flow™ device.
- Keep a small section of the supplied Latex Tube for reference.
- Clean the supplied Latex Tube prior to the first operation and each day when in use.
- To secure the Remote Control from loss, fasten its metallic ring to the wheelchair with a strong twine.

## Maintenance

- We recommend that you use disinfectant alcohol wipes to regularly clean your device & charger. Regular cleaning will expand the life of your Freedom Flow™.

## Limited 1 Year Warranty

Freedom Flow™ is warranted against defects in workmanship for **1 year** from the date of purchase.

Problems arising from misuse, attempts to repair, dropping, exposure to fluids or extreme wear are not covered by this warranty.

If your Freedom Flow™ fails to function during this 1 year period, we will repair your unit free of charge after evaluation. Dynalloy, Inc. will only provide UPS Ground shipping.

## Before Operating Freedom Flow™

- ✓ To familiarize yourself with the Freedom Flow™ operation, we suggest you first install the Main Unit with a new leg bag filled with tap water and observe how it works over a sink.
- ✓ Freedom Flow™ operates by sliding onto your leg bag latex tubing and pinching the tube closed. When activated, the Freedom Flow™ will open and allow fluids to drain. When deactivated, it will re-pinch the tube.
- ✓ The Freedom Flow™ pinch mechanism opens and closes slowly. When holding the Remote Control “ON” allow 3-4 seconds for the pinch mechanism to open. The clamp only opens slightly, which is enough for rapid draining.
- ✓ After releasing the Remote Control allow 3-4 seconds for the clamp mechanism to close.

## Additional Information

- The transmitter battery in the Remote Control (C) should work for over a year before needing replacement, when used properly.
- One 8 hour or overnight charge on the Main Unit should be enough for 1-2 weeks of normal usage (5 operations a day). This may vary depending on personal usage.
- Foreign material in Charger Base or Main Unit may prevent proper charging.

**Important:** Keep dry. Fluids will damage the valve.

## FCC Statement

This device complied with part 15 of the FCC Rules. Operation is subject to the following two conditions: (1) this device may not cause harmful interference, and (2) this device must accept any interference that may cause undesired operation.

## Instruction to the User

This equipment has been tested and found to comply with the limits for a Class B digital device, pursuant to Part 15 of the FCC Rules. These limits are designed to provide reasonable protection against harmful interference in a residential installation. This equipment generates, uses and can radiate radio frequency energy and, if not installed and used in accordance with the instructions, may cause harmful interference to radio communications. However, there is no guarantee that interference will not occur in a particular installation. If this equipment does cause harmful interference to radio or television reception, which can be determined by turning the equipment off and on, the user is encouraged to try to correct the interference by one or more of the following measures:

- Reorient or relocate the receiving antenna.
- Increase the separation between the equipment and receiver.
- Connect the equipment into an outlet on a circuit different from that to which the receiver is connected.
- Consult the dealer or an experienced radio/TV technician for help.

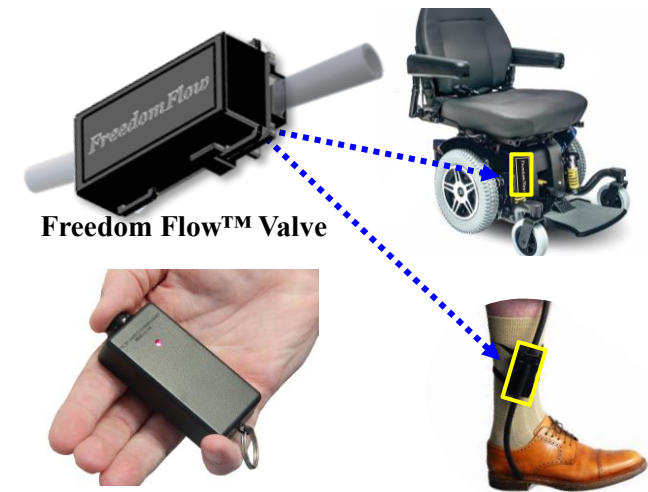
In order to maintain compliance with FCC regulations, shielded cables must be used with this equipment. Operation with non-approved equipment or unshielded cables is likely to result in interference to radio and TV reception. The user is cautioned that changes and modifications made to the equipment without the approval of manufacturer could void the user's authority to operate equipment.



# Freedom Flow™

Independence when you need it!

## Wireless Leg Bag Emptier



Freedom Flow™ Valve

Wireless Remote

## Freedom Flow™ Benefits

- ✓ Silent
- ✓ No Leakage
- ✓ Easy Push Wireless Remote
- ✓ Long Lasting Battery
- ✓ Easy Installation
- ✓ No Wheelchair Power Needed
- ✓ Lightweight, Small, and Discreet

714.436.1206 | [www.freedom-flow.com](http://www.freedom-flow.com)